

MULTISTAGE CENTRIFUGAL AND SELF-PRIMING PUMPS

PERFORMANCE RANGE

DP - DOMESTIC WATER SUPPLY

HYDRAULIC DATA (n ≈ 2800 1/min.)																	
MODEL	P2 NOMINAL		EJECTOR TYPE	SUCTION DEPTH	Delivery pressure in bar												
	kW	HP			1,5	2	2,5	3	3,5	4	4,5	5	5,5	6	6,5	7	
					Capacity table in l/h												
DP 82 M - T	0,6	0,8	E 25	9	1813	1080	446	33	-	-	-	-	-	-	-	-	
				12	1426	225	-	-	-	-	-	-	-	-	-	-	
				15	900	326	-	-	-	-	-	-	-	-	-	-	
			E 30	9	1753	1286	812	524	261	12	-	-	-	-	-	-	-
				12	1345	965	608	329	162	0	-	-	-	-	-	-	-
				15	1166	761	452	228	45	-	-	-	-	-	-	-	
DP 102 M - T	0,75	1	E 25	9	2386	1756	1097	515	126	-	-	-	-	-	-	-	
				12	1930	1190	536	87	-	-	-	-	-	-	-		
				15	1459	773	252	-	-	-	-	-	-	-	-		
			E 30	12	-	1240	872	566	329	156	-	-	-	-	-	-	
				15	-	1028	701	449	255	96	-	-	-	-	-	-	
				18	-	785	527	302	150	15	-	-	-	-	-	-	
DP 151 M - T	1,1	1,5	E 20	9	-	-	-	3470	2890	2220	1500	750	-	-	-	-	
				12	-	-	-	3110	2510	1850	1100	300	-	-	-	-	
				15	-	-	-	2710	2100	1380	640	-	-	-	-	-	
			E 25	15	-	-	-	2800	2330	1830	1350	900	520	-	-	-	
				18	-	-	-	2530	2050	1550	1090	680	300	-	-	-	
				21	-	-	-	2280	1800	1300	860	470	-	-	-	-	
E 30	21	-	-	-	1820	1650	1410	1160	910	700	520	-	-				
	24	-	-	-	1680	1520	1260	1020	780	580	420	-	-				
	27	-	-	-	1550	1360	1110	880	680	490	330	-	-				
DP 251 M - T	1,85	2,5	E 20	9	-	-	-	4300	3600	2900	2180	1400	640	-	-	-	
				12	-	-	-	3750	3140	2540	1700	940	-	-	-		
				15	-	-	-	-	2780	2040	1300	500	-	-	-		
			E 25	15	-	-	-	-	2920	2400	1900	1400	950	570	-	-	
				18	-	-	-	-	2600	2110	1620	1150	720	360	-	-	
				21	-	-	-	-	2350	1850	1350	900	510	-	-		
			E 30	24	-	-	-	-	2050	1550	1080	660	300	-	-		
				21	-	-	-	-	-	1710	1480	1220	980	770	590	420	
				24	-	-	-	-	-	1580	1330	1080	850	670	490	330	
27	-	-	-	-	-	1440	1200	950	750	560	400	250					

M - T = Single-phase (M) and Three-phase (T)

DP**PUMPS FOR DEEP SUCTION****ENERGY EFFICIENCY IE2****DOMESTIC WATER SUPPLY**

DP 82-102



DP 151-251

Self-priming centrifugal pump for suction up to 27 metres, reached by means of an ejector. Cast iron pump body and motor support. Technopolymer impeller and diffusers. Stainless steel adjustment rings. Carbon/ceramic mechanical seal. Cast iron ejector body, technopolymer Venturi tube and brass nozzle. Asynchronous motor closed and cooled by external ventilation.

Built-in thermal and current overload protection and a capacitor permanently on in the single-phase version. For the protection of the three-phase motor it is advisable to use a suitable overload protection complying with the regulations in force.

Operating range: from 0.15 to 4.3 m³/h**Liquid temperature range:**

from 0°C to +40°C for other uses

from 0°C to +35°C for domestic use

Pumped liquid characteristics: clean, free from solids or abrasive substances, not viscous, not aggressive, not crystallised and chemically neutral.**Maximum ambient temperature:** +40°C**Maximum working pressure:**

6 bar (600 kPa) for DP 82 - DP 102

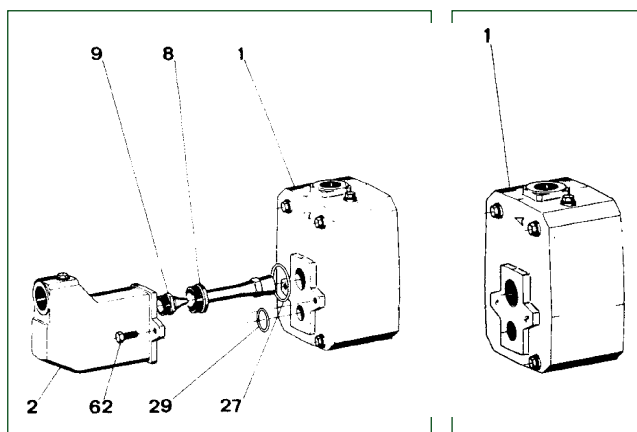
8 bar (800 kPa) for DP 151 - DP 251

Protection level: IP 44**Insulation class:** F

TECHNICAL DATA

MODEL	CODE	ELECTRICAL DATA						
		VOLTAGE 50 Hz	P1 MAX KW	P2 NOMINAL		In A	CAPACITOR	
				kW	HP		µF	Vc
DP 82 M	102660860	1x220-240 V ~	0,73	0,6	0,8	3,4	12,5	450
DP 82 T	102660870	3x230-400 V ~	0,73	0,6	0,8	2,6-1,5	-	-
DP 102 M	102660880	1x220-240 V ~	0,79	0,75	1	3,8	16	450
DP 102 T	60145174	3x230-400 V ~	0,64	0,75	1	2,6-1,5	-	-
DP 151 M	102161042	1x220-240 V ~	1,56	1,1	1,5	7	31,5	450
DP 151 T	60145799	3x230-400 V ~	1,45	1,1	1,5	4,7-2,7	-	-
DP 251 M	102161072	1x220-240 V ~	-	1,85	2,5	8,3	40	450
DP 251 T	60145851	3x230-400 V ~	-	1,85	2,5	5,6-3,2	-	-

INSTRUCTION FOR CONVERSION

**Conversion from DP 151-251 to JET 151-251**

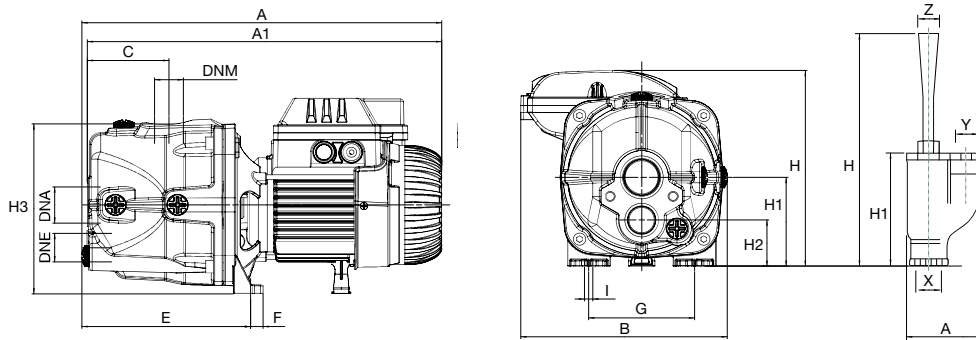
Screw the nozzle (9) into place on the ejector's body (2) and the Venturi tube (8). Put the O-rings (27) and (29) in their respective places and fix the ejector body (2) to the pump body (1) using the two screws (62).

Conversion from JET 151-251 to DP 151-251

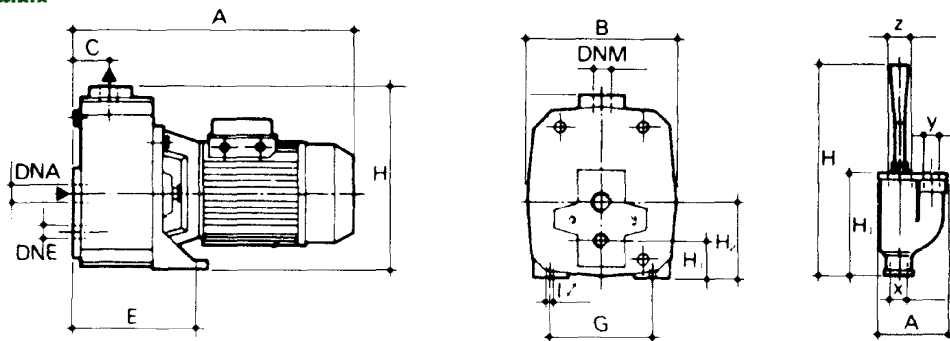
Loosen and remove the two screws (62) connecting the ejector body (2) to the pump body (1). Save the O-rings (27) and (29), the Venturi tube (8) and the nozzle (9).

DIMENSIONS AND WEIGHTS

DP 82-102



DP 151-251 Compatible



MODEL	A	A1	B	C	E	G	I Ø	H	H1	H2	H3	I	DNA GAS	DNM GAS	DNE GAS	EJECTOR						PACKAGING DIMENSIONS			WEIGHT Kg	Q.TY X PALLET
																A	H	H1	x	y	z	L/A	L/B	H		
DP 82 M-T	377	371	175	86	177	111	-	194	94	49	179	9	1 1/4"	1"	1"	97	295	143	1"G	1"G	1 1/4"G	480	240	240	10,7	28
DP 102 M-T	398	392	175	86	177	111	-	203	94	49	179	9	1 1/4"	1"	1"	97	295	143	1"G	1"G	1 1/4"G	480	240	240	13	28
DP 151 M-T	388	-	210	50	197	145	11	155	52	108	-	-	1 1/4"	1"	1"	97	295	143	1"G	1"G	1 1/4"G	-	-	-	28	21
DP 251 M	462	-	210	50	197	145	11	155	53	108	-	-	1 1/4"	1"	1"	97	295	143	1"G	1"G	1 1/4"G	-	-	-	32,5	21
DP 251 T	388	-	210	50	197	145	11	155	53	108	-	-	1 1/4"	1"	1"	97	295	143	1"G	1"G	1 1/4"G	-	-	-	27,9	21

ACCESSORIES - EJECTORS DP

MODEL	CODE	Q.TY X BOX
EJECTORS E 20	109200000	12
EJECTORS E 25	109200020	12
EJECTORS E 30	109200010	12

