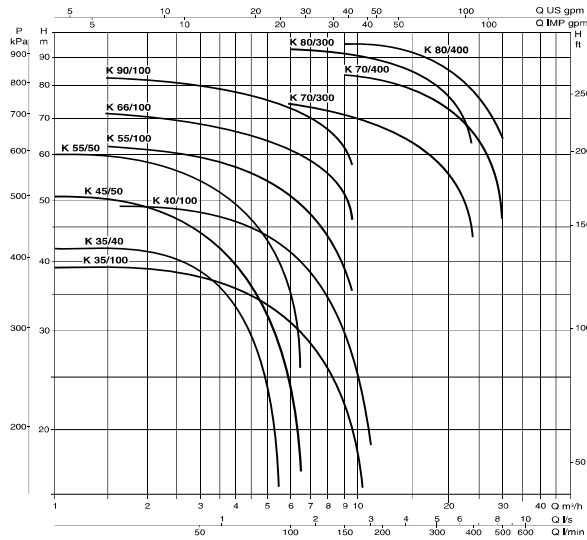


K TWIN IMPELLERS

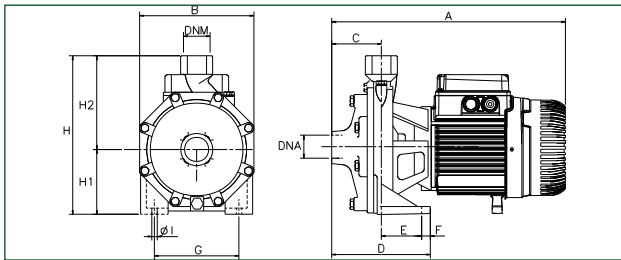
TWIN IMPELLERS CENTRIFUGAL PUMPS

K TWIN IMPELLERS

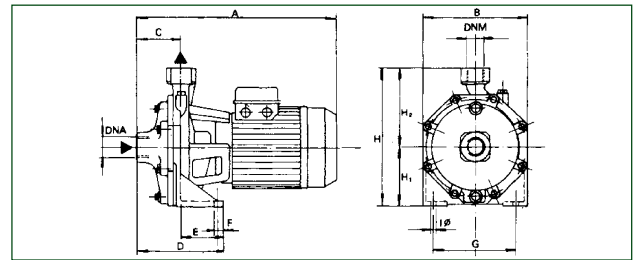


DIMENSIONS AND WEIGHTS

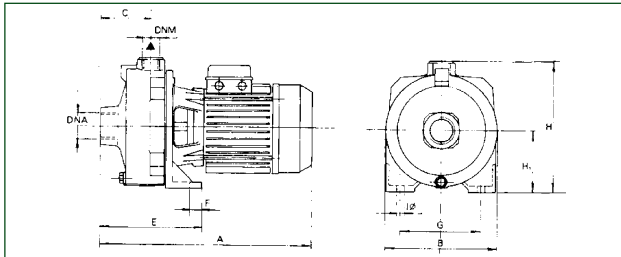
K 35/40



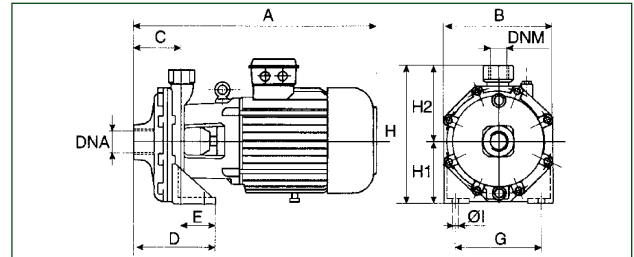
K 45/50 - 55/50 - 66/100 - 90/100



K 35/100 - 40/100



K 70/300 - 80/300 - 70/400 - 80/400



MODEL	A	B	C	D	E	F	G	ØI	H	H1	H2	DNA	DNM	WEIGHT KG	Q.TY x PALLET
K 35/40	342	180	76	148	72	15	148	9,5	235	100	135	1" G	1" G	15,9	27
K 45/50	370	210	75	144	69	15	165	11,5	268	118	150	1 1/4" G	1" G	23,3	21
K 55/50	370	210	75	114	69	15	165	11,5	268	118	150	1 1/4" G	1" G	27,2	18
K 35/100	387	205	88	-	179	20	145	11	233	108	-	1 1/2" G	1" G	22	21
K 40/100 M	461	205	88	-	179	20	145	11	233	108	-	1 1/2" G	1" G	25,9	18
K 40/100 T	387	205	88	-	179	20	145	11	233	108	-	1 1/2" G	1" G	22	21
K 55/100	450	256	88	160	72	18	200	14	312,5	140	172,5	1 1/2" G	1" G	38,1	18
K 66/100	450	256	88	160	72	18	200	14	312,5	140	172,5	1 1/2" G	1" G	40,7	18
K 90/100	450	256	88	160	72	18	200	14	312,5	140	172,5	1 1/2" G	1" G	44	18
K 70/300	595	270	122	182	60	20	210	14	340	160	180	2" G	1 1/4" G	72	6
K 80/300	595	270	122	182	60	20	210	14	340	160	180	2" G	1 1/4" G	79	6
K 70/400	635	270	122	182	60	20	210	14	340	160	180	2" G	1 1/4" G	75	6
K 80/400	635	270	122	182	60	20	210	14	340	160	180	2" G	1 1/4" G	79	6