

NKM-G / NKP-G

STANDARDISED ENBLOC CENTRIFUGAL PUMPS



**CONDITIONING, IRRIGATION, WATER TRANSFER,
PRESSURIZATION, INDUSTRIAL APPLICATION**



Enbloc centrifugal electric pumps with integral shaft designed for a wide range of applications, such as:

- Water supply
- Circulation of hot water for central heating.
- Circulation of cold water for air conditioning and refrigerating.
- Transfer of liquids in agriculture, horticulture and industries.
- Implementation of pumping systems

Pump construction characteristics:

Single-stage, cast iron spiral body made to DIN-EN 733 (formerly DIN 24255), cast iron support, flanges in accordance with DIN 2533. Cast iron impeller, encased and dynamically balanced with compensation of the axial thrust by means of balancing holes, operating (on request) with interchangeable consumable rings. AISI 304 stainless steel pump shaft.

Seal: standardised mechanical seal made to DIN 24960 in carbon / carborundum with O' rings in EPDM.

Motor construction characteristics

Closed, asynchronous motor with external ventilation, 2 poles for NKP and 4 poles for NKM. Rotor mounted on oversized ball bearings to ensure silent running and long life. We recommend using overload protection for the motor, in accordance with current norms. In the

case of liquids denser than water, the motors must be proportionally more powerful.

Built to: IEC 2-3 standards

Protection level: IP 55

Insulation level: F

Standard voltage: 230/400 V 50 Hz up to 2,2 Kw included 400 V Δ 50 Hz over 2,2 Kw

Speed of rotation: 1450 - 2900 1/min.

Operating range: from 1 to 105 m³/h with head up to 96 metres.

Characteristics of pumped liquid: clean, free from solids or abrasive substances, not viscous, not aggressive, not crystallised and chemically neutral and close to the characteristics of water.

Liquid temperature range: from -10°C to +140°C

Maximum ambient temperature: +40°C

Maximum operating pressure: 16 bar - 1600 kPa

Flanging: PN 16 DIN 2533

Installation: normally horizontal or vertical provided the motor is always above the pump.

Special versions on request: pumps for liquids other than water.

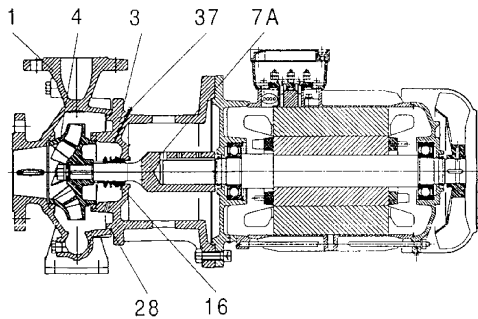
Other voltages and/or frequencies.

ACCESSORIES

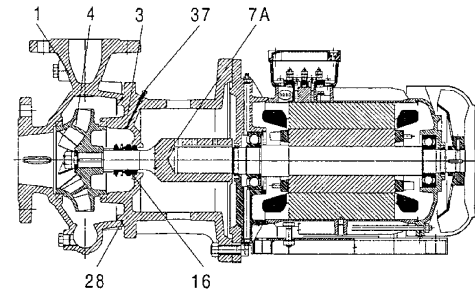
PAG. 375

CENTRIFUGAL PUMPS

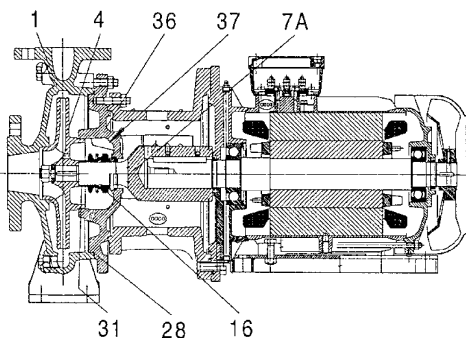
VERSION WITH MOTOR UP TO 7,5 KW COMPRESSED



VERSION WITH MOTOR OVER 7,5 KW



VERSION FOR MODELS: NKM-G 65-315/309/A/BAQE/11/4,
NKM-G100-315/316/A/BAQE/22/4, NKM-G125-250/243/A/BAQE/15/4,
NKM-G 80-200/200/A/BAQE/4/4,
NKM-G 80-250/270/A/BAQE/11/4, NKM-G 80-315/305/A/BAQE/15 /4,
NKM-G 80-315/320/A/BAQE/18,5/4, NKM-G 80-315/334/A/BAQE/22/4
NKM-G100-250/250/A/BAQE/11/4, NKM-G150-200/218/A/BAQE/11/4



N.	PARTS	MATERIALS (STANDARD VERSION)
1	PUMP BODY	250 UNI ISO 185 CAST IRON
3	SUPPORT	250 UNI ISO 185 CAST IRON
4	IMPELLER	250 UNI ISO 185 CAST IRON
7A	PUMP SHAFT	AISI 304 - UNI 6900/71 STAINLESS STEEL
16	MECHANICAL SEAL	CARBON/CARBORUNDUM - EPDM
28	O RING	VITON
31	SPACER SEAL	AISI 304 - UNI 6900/71 STAINLESS STEEL
36	SEAL HOLDER DISK	250 UNI ISO 185 CAST IRON
37	BLEED COCK	AISI 304 - UNI 6900/71 STAINLESS STEEL

N.	PARTS	MATERIALS (STANDARD VERSION)
4	IMPELLER	BRONZE GCuSn5Zn5Pb5 UNI 7013/8a-72
16	MECHANICAL SEAL	CARBON/CARBORUNDUM - PTFE CARBORUNDUM/ CARBORUNDUM - VITON CARBON/CARBORUNDUM - VITON

NKM-G / NKP-G

STANDARDISED ENBLOC CENTRIFUGAL PUMPS

NKM-G - STANDARDISED ENBLOC - 4 POLES

CAST IRON IMPELLER

≅ 1450 1/min

MODEL	CODE	ELECTRICAL DATA					HYDRAULIC DATA																		
		VOLTAGE 50 Hz	P2 NOMINAL		In (A)		Q=m³h	0	6	12	18	24	30	36	42	48	54	60	66	72	78	84	90	102	114
			KW	HP	230V	400V	Q=l/min	0	100	200	300	400	500	600	700	800	900	1000	1100	1200	1300	1400	1500	1700	1900
NKM-G 32-125.1/140/A/BAQE/0.25/4	1D1K11BX3	3 x 230 - 400 V ~	0.25	0.33	1,56	0,9	6.2	5.8	4.2																
NKM-G 32-125/142/A/BAQE/ 0.37/4	1D1111B13	3 x 230 - 400 V ~	0.37	0.5	1,69	1,0	7	6.75	5.85	4.2															
NKM-G 32-160.1 169/A/BAQE/0.37/4	1D1L11B13	3 x 230 - 400 V ~	0.37	0.5	1,69	1,0	8.9	8.2	4.6																
NKM-G 32-160/169/A/BAQE/0,55/4	1D1211B23	3 x 230 - 400 V ~	0.55	0.75	2,60	1,5	9.4	9	7.9	5.6															
NKM-G 32-200.1 200/A/BAQE/0,55/4	1D1M11B23	3 x 230 - 400 V ~	0.55	0.75	2,60	1,5	12.7	11.2	7.2																
NKM-G 32-200/200/A/BAQE/ 0,75/4	1D1311B3C	3 x 230 - 400 V ~	0.75	1	3,57	2,1	13	12.5	11.1	8.45															
NKM-G 32-200/219/A/BAQE/ 1,1 /4	1D1311B4C	3 x 230 - 400 V ~	1.1	1.5	4,68	2,7	16	15.4	14.3	12.2															
NKM-G 40-125/115/A/BAQE/ 0.25/4	1D2111BX3	3 x 230 - 400 V ~	0.25	0.33	1,56	0,9	4.2	4.1	3.7	3	2.1														
NKM-G 40-125/130/A/BAQE/ 0.37/4	1D2111B13	3 x 230 - 400 V ~	0.37	0.5	1,69	1,0	5.4	5.3	5	4.4	3.5														
NKM-G 40-125/142/A/BAQE/ 0.55/4	1D2111B23	3 x 230 - 400 V ~	0.55	0.75	2,60	1,5	6.6	6.5	6.2	5.7	4.8														
NKM-G 40-160/153/A/BAQE/ 0.55/4	1D2211B23	3 x 230 - 400 V ~	0.55	0.75	2,60	1,5	7.6	7.6	7.5	6.7	5.5														
NKM-G 40-160/166/A/BAQE/ 0.75/4	1D2211B3C	3 x 230 - 400 V ~	0.75	1	3,57	2,1	9.2	9.2	9	8.4	7.4	5.7													
NKM-G 40-200/200/A/BAQE/ 1,1 /4	1D2311B4C	3 x 230 - 400 V ~	1.1	1.5	4,68	2,7	12.5	12.5	12.3	11.2	9.7	7.7													
NKM-G 40-200/219/A/BAQE/ 1,5 /4	1D2311B5C	3 x 230 - 400 V ~	1.5	2	6,24	3,6	15.6	15.6	15.3	14.7	13.4	11.8	9.8												
NKM-G 40-250/245/A/BAQE/ 2,2 /4	1D2411B6C	3 x 230 - 400 V ~	2.2	3	8,75	5,1	20.6	20.5	20.1	19.2	17.8	16													
NKM-G 40-250/260/A/BAQE/ 3 /4	1D2411B7D	3 x 400 V ~	3	4	-	6,3	23.3	23.1	22.8	22.2	20.8	19													
NKM-G 50-125/130/A/BAQE/ 0.55/4	1D3111B2C	3 x 230 - 400 V ~	0.55	0.75	2,60	1,5	5.5	5.2	5	4.7	4.3	3.9	3.3	2.6											
NKM-G 50-125/141/A/BAQE/ 0.75/4	1D3111B3C	3 x 230 - 400 V ~	0.75	1	3,57	2,1	6.5	6.3	6.1	5.8	5.5	5	4.5	3.9											
NKM-G 50-160/161/A/BAQE/ 1.1 /4	1D3211B4C	3 x 230 - 400 V ~	1.1	1.5	4,68	2,7	8.6	8.6	8.5	8.2	7.8	7.3	6.7	5.7											
NKM-G 50-160/177/A/BAQE/ 1,5 /4	1D3211B5C	3 x 230 - 400 V ~	1.5	2	6,24	3,6	10.7	10.7	10.7	10.5	10.2	9.8	9.2	8.3											
NKM-G 50-200/210/A/BAQE/ 2,2 /4	1D3311B6C	3 x 230 - 400 V ~	2.2	3	8,75	5,1	15.3	15.3	15.2	14.8	14	13.3	12.1	10.8	9.4										
NKM-G 50-200/219/A/BAQE/ 3 /4	1D3311B7D	3 x 400 V ~	3	4	-	6,3	16.8	16.8	16.5	16.1	15.5	14.6	13.6	12.4	10.9										
NKM-G 50-250/263/A/BAQE/ 4 /4	1D3411B8D	3 x 400 V ~	4	5.5	-	8,0	23.8	23.8	23.8	23.4	22.7	21.6	20.4	19	17.1										
NKM-G 65-125/130/A/BAQE/ 0.75/4	1D4111B3C	3 x 230 - 400 V ~	0.75	1	3,57	2,1	5.1	4.9	4.8	4.75	4.7	4.4	4.2	3.8	3.4	3	2.5								
NKM-G 65-125/144/A/BAQE/ 1.1 /4	1D4111B4C	3 x 230 - 400 V ~	1.1	1.5	4,68	2,7	6.5	6.4	6.4	6.3	6.2	6	5.75	5.5	5.1	4.65	4.2	3.75							
NKM-G 65-160/153/A/BAQE/ 1,1 /4	1D4211B4C	3 x 230 - 400 V ~	1.1	1.5	4,68	2,7	7.4	7.4	7.3	7.15	6.9	6.65	6.25	5.8	5.3	4.4									
NKM-G 65-160/165/A/BAQE/ 1,5 /4	1D4211B5C	3 x 230 - 400 V ~	1.5	2	6,24	3,6	8.9		8.8	8.7	8.6	8.3	8	7.6	7.15	6.6	6								
NKM-G 65-160/177/A/BAQE/ 2,2 /4	1D4211B6C	3 x 230 - 400 V ~	2.2	3	8,75	5,1	10.5			10.4	10.3	10.2	9.9	9.6	9.2	8.75	8.2	7.4	6.6						
NKM-G 65-200/210/A/BAQE/ 3 /4	1D4311B7D	3 x 400 V ~	3	4	-	6,3	15.3			15.2	15.2	15.1	14.6	14.1	13.5	12.9	12.2	11.3							
NKM-G 65-200/219/A/BAQE/ 4 /4	1D4311B8D	3 x 400 V ~	4	5.5	-	8,0	17			17	16.9	16.8	16.4	16.2	15.8	15.2	14.3	13.8	12.6						
NKM-G 65-250/263/A/BAQE/ 5,5 /4	1D4511B9D	3 x 400 V ~	5.5	7.5	-	10,6	24.1			23.8	23.6	23.3	22.8	22.3	21.5	20.8	19.7	18.6	17.3						
NKM-G 65-315/279/A/BAQE/ 7,5 /4	1D4511BAD	3 x 400 V ~	7.5	10	-	14,2	27						26	25.5	25	24.5	23.6	22.7	21.5	20.2	19				
NKM-G 65-315/309/A/BAQE/11 /4	1D4511BBD	3 x 400 V ~	11	15	-	21,6	34.2							33.2	33	32.5	32	31.5	30.7	29.8	29	28	25	21.7	

CENTRIFUGAL PUMPS

NKM-G - STANDARDISED ENBLOC - 4 POLES

BRONZE IMPELLER

≈ 1450 1/min

CENTRIFUGAL PUMPS

MODEL	CODE	ELECTRICAL DATA					HYDRAULIC DATA																			
		VOLTAGE 50 Hz	P2 NOMINAL		In (A)		Q=m³h		0	6	12	18	24	30	36	42	48	54	60	66	72	78	84	90	102	114
			KW	HP	230V	400V	Q=l/min	0	100	200	300	400	500	600	700	800	900	1000	1100	1200	1300	1400	1500	1700	1900	
NKM-G 32-125.1/140/B/BAQE /0.25/4	1D1K21BX3	3 x 230 - 400 V ~	0.25	0.33	1,56	0,9	6.2	5.8	4.2																	
NKM-G 32-125/142/B/BAQE / 0.37/4	1D1121B13	3 x 230 - 400 V ~	0.37	0.5	1,69	1,0	7	6.75	5.85	4.2																
NKM-G 32-160.1169/B/BAQE /0.37/4	1D1L21B13	3 x 230 - 400 V ~	0.37	0.5	1,69	1,0	8.9	8.2	4.6																	
NKM-G 32-160/169/B/BAQE /0,55/4	1D1221B23	3 x 230 - 400 V ~	0.55	0.75	2,60	1,5	9.4	9	7.9	5.6																
NKM-G 32-200.1200/B/BAQE /0,55/4	1D1M21B23	3 x 230 - 400 V ~	0.55	0.75	2,60	1,5	12.7	11.2	7.2																	
NKM-G 32-200/200/B/BAQE / 0,75/4	1D1321B3C	3 x 230 - 400 V ~	0.75	1	3,57	2,1	13	12.5	11.1	8.45																
NKM-G 32-200/219/B/BAQE / 1,1 /4	1D1321B4C	3 x 230 - 400 V ~	1.1	1.5	4,68	2,7	16	15.4	14.3	12.2																
NKM-G 40-125/115/B/BAQE / 0.25/4	1D2121BX3	3 x 230 - 400 V ~	0.25	0.33	1,56	0,9	4.2	4.1	3.7	3	2.1															
NKM-G 40-125/130/B/BAQE / 0.37/4	1D2121B13	3 x 230 - 400 V ~	0.37	0.5	1,69	1,0	5.4	5.3	5	4.4	3.5															
NKM-G 40-125/142/B/BAQE / 0.55/4	1D2121B23	3 x 230 - 400 V ~	0.55	0.75	2,60	1,5	6.6	6.5	6.2	5.7	4.8															
NKM-G 40-160/153/B/BAQE / 0.55/4	1D2221B23	3 x 230 - 400 V ~	0.55	0.75	2,60	1,5	7.6	7.6	7.5	6.7	5.5															
NKM-G 40-160/166/B/BAQE / 0.75/4	1D2221B3C	3 x 230 - 400 V ~	0.75	1	3,57	2,1	9.2	9.2	9	8.4	7.4	5.7														
NKM-G 40-200/200/B/BAQE / 1,1 /4	1D2321B4C	3 x 230 - 400 V ~	1.1	1.5	4,68	2,7	12.5	12.5	12.3	11.2	9.7	7.7														
NKM-G 40-200/219/B/BAQE / 1,5 /4	1D2321B5C	3 x 230 - 400 V ~	1.5	2	6,24	3,6	15.6	15.6	15.3	14.7	13.4	11.8	9.8													
NKM-G 40-250/245/B/BAQE / 2,2 /4	1D2421B6C	3 x 230 - 400 V ~	2.2	3	8,75	5,1	20.6	20.5	20.1	19.2	17.8	16														
NKM-G 40-250/260/B/BAQE / 3 /4	1D2421B7D	3 x 400 V ~	3	4	-	6,3	23.3	23.1	22.8	22.2	20.8	19														
NKM-G 50-125/130/B/BAQE / 0.55/4	1D3121B23	3 x 230 - 400 V ~	0.55	0.75	2,60	1,5	5.5		5.2	5	4.7	4.3	3.9	3.3	2.6											
NKM-G 50-125/141/B/BAQE / 0.75/4	1D3121B3C	3 x 230 - 400 V ~	0.75	1	3,57	2,1	6.5		6.3	6.1	5.8	5.5	5	4.5	3.9											
NKM-G 50-160/161/B/BAQE / 1.1 /4	1D3221B4C	3 x 230 - 400 V ~	1.1	1.5	4,68	2,7	8.6		8.6	8.5	8.2	7.8	7.3	6.7	5.7											
NKM-G 50-160/177/B/BAQE / 1,5 /4	1D3221B5C	3 x 230 - 400 V ~	1.5	2	6,24	3,6	10.7		10.7	10.7	10.5	10.2	9.8	9.2	8.3											
NKM-G 50-200/210/B/BAQE / 2,2 /4	1D3321B6C	3 x 230 - 400 V ~	2.2	3	8,75	5,1	15.3		15.3	15.2	14.8	14	13.3	12.1	10.8	9.4										
NKM-G 50-200/219/B/BAQE / 3 /4	1D3321B7D	3 x 400 V ~	3	4	-	6,3	16.8		16.8	16.5	16.1	15.5	14.6	13.6	12.4	10.9										
NKM-G 50-250/263/B/BAQE / 4 /4	1D3421B8D	3 x 400 V ~	4	5.5	-	8,0	23.8		23.8	23.8	23.4	22.7	21.6	20.4	19	17.1										
NKM-G 65-125/130/B/BAQE / 0.75/4	1D4121B3C	3 x 230 - 400 V ~	0.75	1	3,57	2,1	5.1		4.9	4.8	4.75	4.7	4.4	4.2	3.8	3.4	3	2.5								
NKM-G 65-125/144/B/BAQE / 1.1 /4	1D4121B4C	3 x 230 - 400 V ~	1.1	1.5	4,68	2,7	6.5		6.4	6.4	6.3	6.2	6	5.75	5.5	5.1	4.65	4.2	3.75							
NKM-G 65-160/153/B/BAQE / 1,1 /4	1D4221B4C	3 x 230 - 400 V ~	1.1	1.5	4,68	2,7	7.4		7.4	7.3	7.15	6.9	6.65	6.25	5.8	5.3	4.4									
NKM-G 65-160/165/B/BAQE / 1,5 /4	1D4221B5C	3 x 230 - 400 V ~	1.5	2	6,24	3,6	8.9			8.8	8.7	8.6	8.3	8	7.6	7.15	6.6	6								
NKM-G 65-160/177/B/BAQE / 2,2 /4	1D4221B6C	3 x 230 - 400 V ~	2.2	3	8,75	5,1	10.5				10.4	10.3	10.2	9.9	9.6	9.2	8.75	8.2	7.4	6.6						
NKM-G 65-200/210/B/BAQE / 3 /4	1D4321B7D	3 x 400 V ~	3	4	-	6,3	15.3				15.2	15.2	15.1	14.6	14.1	13.5	12.9	12.2	11.3							
NKM-G 65-200/219/B/BAQE / 4 /4	1D4321B8D	3 x 400 V ~	4	5.5	-	8,0	17				17	16.9	16.8	16.4	16.2	15.8	15.2	14.3	13.8	12.6						
NKM-G 65-250/263/B/BAQE / 5,5 /4	1D4421B9D	3 x 400 V ~	5.5	7.5	-	10,6	24.1				23.8	23.6	23.3	22.8	22.3	21.5	20.8	19.7	18.6	17.3						
NKM-G 65-315/279/B/BAQE / 7,5 /4	1D4521BAD	3 x 400 V ~	7.5	10	-	14,2	27							26	25.5	25	24.5	23.6	22.7	21.5	20.2	19				
NKM-G 65-315/309/B/BAQE /11 /4	1D4521BBD	3 x 400 V ~	11	15	-	21,6	34.2								33.2	33	32.5	32	31.5	30.7	29.8	29	28	25		21.7

NKP-G

STANDARDISED ENBLOC CENTRIFUGAL PUMPS

NKP-G - STANDARDISED ENBLOC - 2 POLES**BRONZE IMPELLER**

≈ 2900 1/min

MODEL	CODE	ELECTRICAL DATA				HYDRAULIC DATA														
		VOLTAGE 50 Hz	P2 NOMIN.		In (A)		Q=m³h	0	6	12	18	24	30	36	42	48	54	60	66	72
			kW	HP	230V	400V	Q=l/min	0	100	200	300	400	500	600	700	800	900	1000	1100	1200
NKP-G 32-125.1/102/B/BAQE/0.75/2	1D1K21B3A	3 x 230 - 400 V ~	0,75	1	2,81	1,6		13	12.5	11	8									
NKP-G 32-125.1/115/B/BAQE/1.1/2	1D1K21B4A	3 x 230 - 400 V ~	1,1	1.5	4,09	2,4		17.2	17	15	12.5									
NKP-G 32-125.1/125/B/BAQE/1.5/2	1D1K21B5A	3 x 230 - 400 V ~	1,5	2	5,80	3,4		21	20.8	19	16.8									
NKP-G 32-125.1/140/B/BAQE/2.2/2	1D1K21B6A	3 x 230 - 400 V ~	2,2	3	8,23	4,8		27	26.9	25.9	23	19.5								
NKP-G 32-125/110/B/BAQE/1.1/2	1D1121B4A	3 x 230 - 400 V ~	1,1	1.5	4,09	2,4		15.8	15.2	14.5	12.9	9.9								
NKP-G 32-125/120/B/BAQE/1.5/2	1D1121B5A	3 x 230 - 400 V ~	1,5	2	5,80	3,4		19.3	18.9	18.2	16.8	14.5								
NKP-G 32-125/130/B/BAQE/2.2/2	1D1121B6A	3 x 230 - 400 V ~	2,2	3	8,23	4,8		23.6	23.1	23	21.6	19.6	16.8							
NKP-G 32-125/142/B/BAQE/3/2	1D1121B7B	3 x 400 V ~	3,0	4		5,9		28.6	28	27.6	26.5	24.6	21.8	17.9						
NKP-G 32-160.1 155/B/BAQE/2.2/2	1D1L21B6A	3 x 230 - 400 V ~	2,2	3	8,23	4,8		29.2	29	26.5	20.5									
NKP-G 32-160.1 166/B/BAQE/3/2	1D1L21B7B	3 x 400 V ~	3,0	4	-	5,9		35.3	35	33	28									
NKP-G 32-160/151/B/BAQE/3/2	1D1221B7B	3 x 400 V ~	3,0	4	-	5,9		30.5	30	29	27	24	19.5							
NKP-G 32-160/163/B/BAQE/4/2	1D1221B8B	3 x 400 V ~	4,0	5.5	-	8,1		36.2	36	35	33.5	30.5	27	22						
NKP-G 32-160/177/B/BAQE/5,5/2	1D1221B9B	3 x 400 V ~	5,5	7.5	-	10,4		43.5	43.2	42.6	41.5	39	36	31.5	25.5					
NKP-G 32-200.1 188/B/BAQE/4/2	1D1M21B8B	3 x 400 V ~	4,0	5.5	-	8,1	H (m)	45.3	44.4	40.8	34.4	26.8								
NKP-G 32-200.1 205/B/BAQE/5,5/2	1D1M21B9B	3 x 400 V ~	5,5	7.5	-	10,4		56.6	55.7	52	45.8	36.2								
NKP-G 32-200/190/B/BAQE/5,5/2	1D1321B9B	3 x 400 V ~	5,5	7.5	-	10,4		46.9	46.5	45	43	40	35	29						
NKP-G 32-200/210/B/BAQE/7,5/2	1D1321BAB	3 x 400 V ~	7,5	10	-	14,0		58.8	58	57	56	53	49	44						
NKP-G 40-125/107/B/BAQE/1.5/2	1D2121B5A	3 x 230 - 400 V ~	1,5	2	5,80	3,4		14.7	14.5	14.3	13.8	13	11.8	10.5	8.6	7				
NKP-G 40-125/120/B/BAQE/2.2/2	1D2121B6A	3 x 230 - 400 V ~	2,2	3	8,23	4,8		19	18.7	18.4	17.8	17	15.9	14.6	13	11				
NKP-G 40-125/130/B/BAQE/3/2	1D2121B7B	3 x 400 V ~	3,0	4	-	5,9		22.8	22.5	22.3	22	21.2	20.2	19	17.4	15.5	13.5			
NKP-G 40-125/139/B/BAQE/4/2	1D2121B8B	3 x 400 V ~	4,0	5.5	-	8,1		26.4	26.2	26	25.6	25	24	23	21.5	19.5	17.5	15		
NKP-G 40-160/158/B/BAQE/5,5/2	1D2221B9B	3 x 400 V ~	5,5	7.5	-	10,4		33.7			34	33.4	32.4	31	29.5	27	24			
NKP-G 40-160/172/B/BAQE/7,5/2	1D2221BAB	3 x 400 V ~	7,5	10	-	14,0		40.7			40.2	40.1	39.8	38.5	37.5	35.5	33	30	26.5	
NKP-G 40-200/210/B/BAQE/11/2	1D2321BBB	3 x 400 V ~	11,0	15	-	20,2		57.1	57	57	56.8	56.5	56	55	53	50	47	43.5	39	
NKP-G 40-250/230/B/BAQE/15/2	1D2421BCB	3 x 400 V ~	15,0	20	-	27,0		72.5			72.5	72	70	68	66	62.5	60	56	51.5	
NKP-G 40-250/245/B/BAQE/18.5/2	1D2421BDB	3 x 400 V ~	18,5	25	-	33,0		83			83	82.5	81.5	80	77	74	71.5	67.5	63.5	58.5
NKP-G 40-250/260/B/BAQE/22/2	1D2421BEB	3 x 400 V ~	22,0	30	-	39,5		96			95	94.5	93.5	92	90	87.5	84	81	76.5	71.5

MODEL
NKM-G/NKP-G 32/125.1
NKM-G/NKP-G 32/160.1
NKM-G/NKP-G 32/200.1
NKM-G/NKP-G 32/125
NKM-G/NKP-G 32/160
NKM-G/NKP-G 32/200
NKM-G/NKP-G 40/125
NKM-G/NKP-G 40/160
NKM-G/NKP-G 40/200
NKM-G/NKP-G 40/250
NKM-G/NKP-G 50/125
NKM-G/NKP-G 50/160
NKM-G/NKP-G 50/200
NKM-G/NKP-G 50/250
NKM-G/NKP-G 65/125
NKM-G/NKP-G 65/160
NKM-G/NKP-G 65/200
NKM-G 65/250
NKM-G 65/315
NKM-G/NKP-G 80/160
NKM-G/NKP-G 80/200
NKM-G 80/250
NKM-G 80/315
NKM-G 100/200
NKM-G 100/250
NKM-G 100/315
NKM-G 125/250
NKM-G 150/200

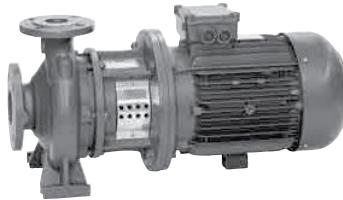
MODEL
NKM-G / NKP-G 32/125.1
NKM-G / NKP-G 32/125
NKM-G / NKP-G 32/160.1
NKM-G / NKP-G 32/160
NKM-G / NKP-G 32/200.1
NKM-G / NKP-G 32/200
NKM-G / NKP-G 40/125
NKM-G / NKP-G 40/160
NKM-G / NKP-G 40/200
NKM-G / NKP-G 40/250
NKM-G / NKP-G 50/125
NKM-G / NKP-G 50/160
NKM-G / NKP-G 50/200
NKM-G / NKP-G 50/250
NKM-G / NKP-G 65/125
NKM-G / NKP-G 65/160
NKM-G / NKP-G 65/200
NKM-G / NKP-G 65/250
NKM-G / NKP-G 65/315
NKM-G / NKP-G 80/160
NKM-G / NKP-G 80/200
NKM-G / NKP-G 80/250
NKM-G / NKP-G 80/315
NKM-G / NKP-G 100/200
NKM-G / NKP-G 100/250
NKM-G / NKP-G 100/315
NKM-G / NKP-G 125/250
NKM-G / NKP-G 150/200

VERSIONS WITH SPECIAL MECHANICAL SEALS

(1) Ref. Technical catalogue mechanical seal "E version" = Silicon carbide/silicon carbide/EPDM

(2) Ref. Technical catalogue mechanical seal "C version" = with rubber bellow: silicon carbide/silicon carbide/Viton

(3) Ref. Technical catalogue mechanical seal "D version" = with rubber bellow: carbon/silicon carbide/Viton



CATAPHORESIS COATING FOR COMPONENTS IN CONTACT WITH LIQUID

ACCESSORIES - SHIMS

Available on request separately from the pump. Used to level the pump during installation so as to make up for the difference in centreline heights between the pump and the motor. The kit comprises two shims with dimensions A (width), B (length), H (height) shown in the table. The shims with a height of over 20 mm are supplied complete with screws, nuts and washers in order to fix them to the pump and motor.

NKM-G 4 POLES

MODEL	CODE	For pump type	P2 kW	DIMENSIONS A x B x H mm
KIT SHIM nr 1	147120800	NKM-G 65-315/309/1¼	11	90 x 335 x 65
KIT SHIM nr 5	147120840	NKM-G 80-250/270/1¼	11	80 x 290 x 40
KIT SHIM nr 2	147120810	NKM-G 80-315/305/15/4	15	90 x 335 x 90
KIT SHIM nr 3	147120820	NKM-G 80-315/320/18,5/4	18,5	100 x 320 x 70
		NKM-G 80-315/334/22/4	22	
KIT SHIM nr 1	147120800	NKM-G100-250/250/1¼	11	90 x 335 x 65
		NKM-G100-250/270/15/4	15	
KIT SHIM nr 3	147120820	NKM-G100-315/300/18,5/4	18,5	100 x 320 x 70
		NKM-G100-315/316/22/4	22	
KIT SHIM nr 2	147120810	NKM-G125-250/243/15/4	15	90 x 335 x 90
KIT SHIM nr 3	147120820	NKM-G125-250/256/18,5/4	18,5	100 x 320 x 70
		NKM-G125-250/266/22/4	22	
KIT SHIM nr 4	147120830	NKM-G150-200/218/1¼	11	80 x 290 x 120

NKM-G 2 POLES

MODEL	CODE	For pump type	P2 kW	DIMENSIONS A x B x H mm
KIT SHIM nr 6	147120850	NKP-G 32-125/142/3/2	3	50 x 100 x 20
		NKP-G 32-160/177/5,5/2	5,5	
		NKP-G 40-125/130/3/2	3	
		NKP-G 40-125/139/4/2	4	
		NKP-G 40-160/158/5,5/2	5,5	
KIT SHIM nr 7	147120860	NKP-G 40-160/172/7,5/2	7,5	70 x 332 x 20
		NKP-G 40-200/210/1½	11	
		NKP-G 40-250/230/15/2	15	
KIT SHIM nr 6	147120850	NKP-G 40-250/245/18,5/2	18,5	50 x 100 x 20
		NKP-G 50-125/135/5,5/2	5,5	
KIT SHIM nr 7	147120860	NKP-G 50-125/144/7,5/2	7,5	70 x 332 x 20
		NKP-G 50-160/169/1½	11	
		NKP-G 50-200/200/15/2	15	
		NKP-G 50-200/210/18,5/2	18,5	
		NKP-G 65-160/157/1½	11	
		NKP-G 65-160/173/15/2	15	
		NKP-G 65-200/190/18,5/2	18,5	
		NKP-G 80-160/147-127/1½	11	
		NKP-G 80-160/153/15/2	15	
KIT SHIM nr 8	147120870	NKP-G 80-200/190/30/2	30	70 x 125 x 20

COUNTERFLANGE KIT

The kit comprises suction and delivery counterflanges with the relative seals, screws and nuts required by the size of the pump to which it refers.



MODEL	CODE	COUNTERFLANGES AND SEALS	MATERIAL	PN	WEIGHT Kg	
DIN 32	109620520	1 x DN 32 + 1 x DN 50	THREADED	STEEL	16	5,9
DIN 40	109620530	1 x DN 40 + 1 x DN 65	THREADED	STEEL	16	6,6
DIN 50	109620540	1 x DN 50 + 1 x DN 65	THREADED	STEEL	16	7,6
DIN 65	109620550	1 x DN 65 + 1 x DN 80	THREADED	STEEL	16	8,6
DIN 32	109620400	1 x DN 32 + 1 x DN 50	TO BE WELDED	STEEL	16	5,1
DIN 40	109620410	1 x DN 40 + 1 x DN 65	TO BE WELDED	STEEL	16	6

MODEL	CODE	COUNTERFLANGES AND SEALS	MATERIAL	PN	WEIGHT Kg	
DIN 50	109620420	1 x DN 50 + 1 x DN 65	TO BE WELDED	STEEL	16	6,6
DIN 65	109620430	1 x DN 65 + 1 x DN 80	TO BE WELDED	STEEL	16	8,1
DIN 80	109620440	1 x DN 80 + 1 x DN 100	TO BE WELDED	STEEL	16	10,4
DIN 100	109620450	1 x DN 100 + 1 x DN 125	TO BE WELDED	STEEL	16	13,13
DIN 125	109620460	1 x DN 125 + 1 x DN 150	TO BE WELDED	STEEL	16	16,4
DIN 150	109620470	1 x DN 150 + 1 x DN 200	TO BE WELDED	STEEL	16 (10 x DN 200)	21,5